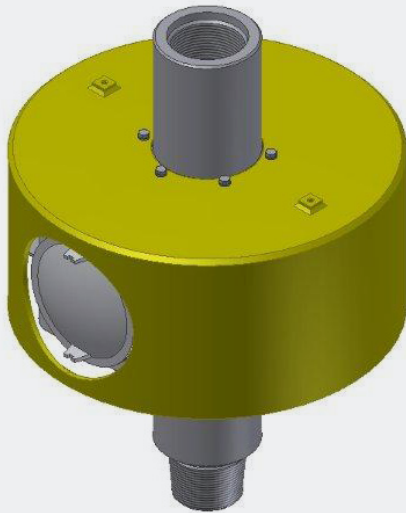


Wireless Torque Sub



Key Benefits

- Redundant strain circuits for reliable torque measurement
- Portable ATEX Zone 1 receiver module for convenient placement on the rig floor
- 7 day battery life (± 1 day)
- Weatherproof

Key Features

- Interfaces with existing Frank's International Advantage computers for a complete ATEX Zone 1
- Torque/turn tubular connection make-up monitoring system

Use in the following applications:

Shelf

Land

Mechanical Performance

Torque capacity	$\pm 50,000$ ft-lbs
Torque calibration error	$\pm 1\%$ of full scale
Tension capacity	500 tons per API 8C

Mechanical Performance

Operational temperature	-20 to 40°C [-4 to 104°F]
Storage temperature	-20 to 55°C [-4 to 131°F]
Hazardous area	ATEX Class 1 Zone 1
Certification	CE Ex II 2 GD Eex-d[ia] IIC T6, CESI 03 ATEX 174

Physical Attributes

Height	41 in [1,041 mm]
Rotational diameter	29 in [737 mm]
Weight	950 lbs [430 kg] (estimate)